



MONTHLY MEMBERSHIP PROGRESS REPORT

District 22 B

Results as of: 06/30/2019

GMT: MAHESH CHITNIS

LOCATION MARYLAND

GMT CA

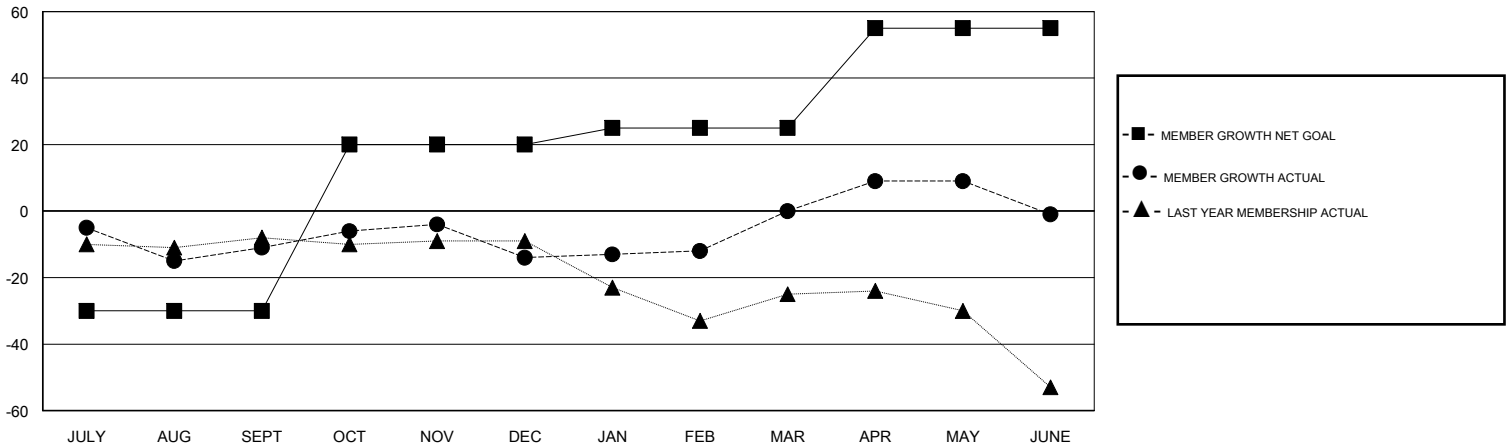
Clubs			
RESULTS FOR 2018-2019			
QUARTER	NEW CLUB GOAL	NEW CLUBS	DROPPED CLUBS
JULY/AUG/SEPT	0	0	0
OCT/NOV/DEC	1	0	0
JAN/FEB/MAR	0	0	0
APR/MAY/JUNE	1	0	1

Members			
RESULTS FOR 2018-2019			
QUARTER	MEMBER GROWTH NET GOAL	MEMBER GROWTH ACTUAL	DROPPED MEMBERS ACTUAL (including transfers)
JULY/AUG/SEPT	-30	20	31
OCT/NOV/DEC	50	25	27
JAN/FEB/MAR	5	38	24
APR/MAY/JUNE	30	37	36

GOALS AND ACTUAL NEW CLUBS CUMULATIVE



GOALS AND ACTUAL MEMBERS CUMULATIVE



DROPPED CLUBS: 1	31 CLUBS OF 46 ADDED 1 OR MORE NEW MEMBERS	<u>GENDER DISTRIBUTION</u> MALE 932 (71.75%) FEMALE 367 (28.25%) Women Percentage Fiscal Year Goal: 25%
<u>DROPPED MEMBERS</u> DECEASED 22 CLUB CANCELLED 9 OTHER 87 TOTAL 118	CLICK HERE FOR CUMULATIVE MEMBERSHIP DATA	TOTAL FAMILY UNIT MEMBERS 152 FAMILY MEMBERS PAYING HALF DUES 76